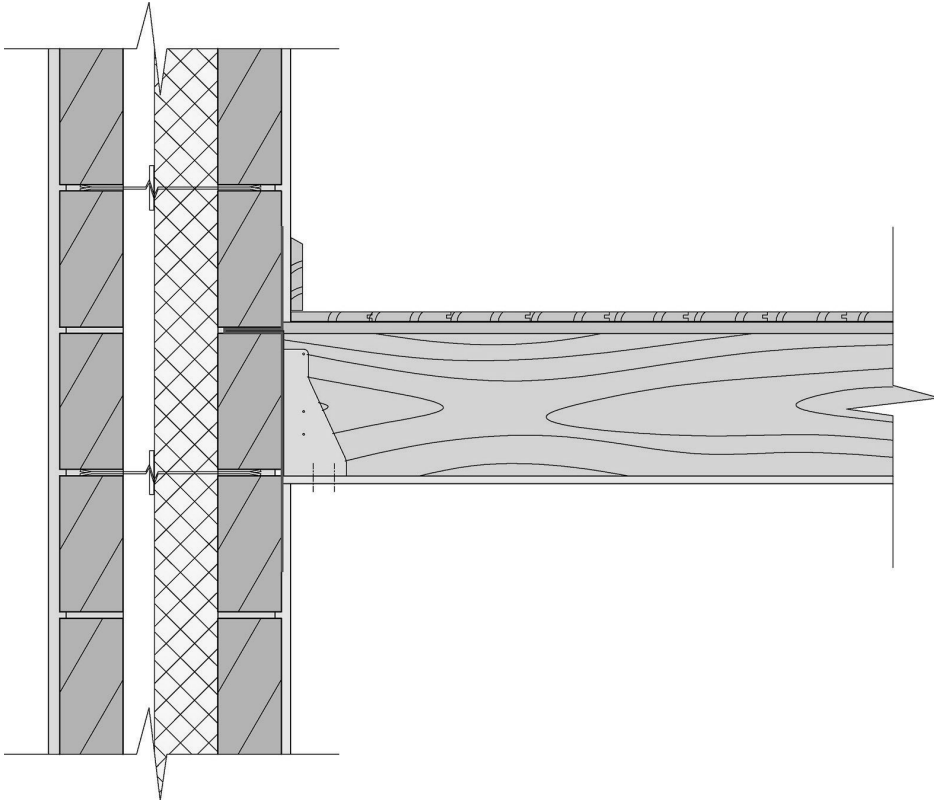


Chapter 18: Internal elements

1. Why are engineered timber joists sometimes used instead of solid timber joists?

2. Label the parts:



3. Explain, using a neat annotated sketch, the guidelines for drilling and notching of timber joists.

4. What is the function of the strutting between timber floor joists?

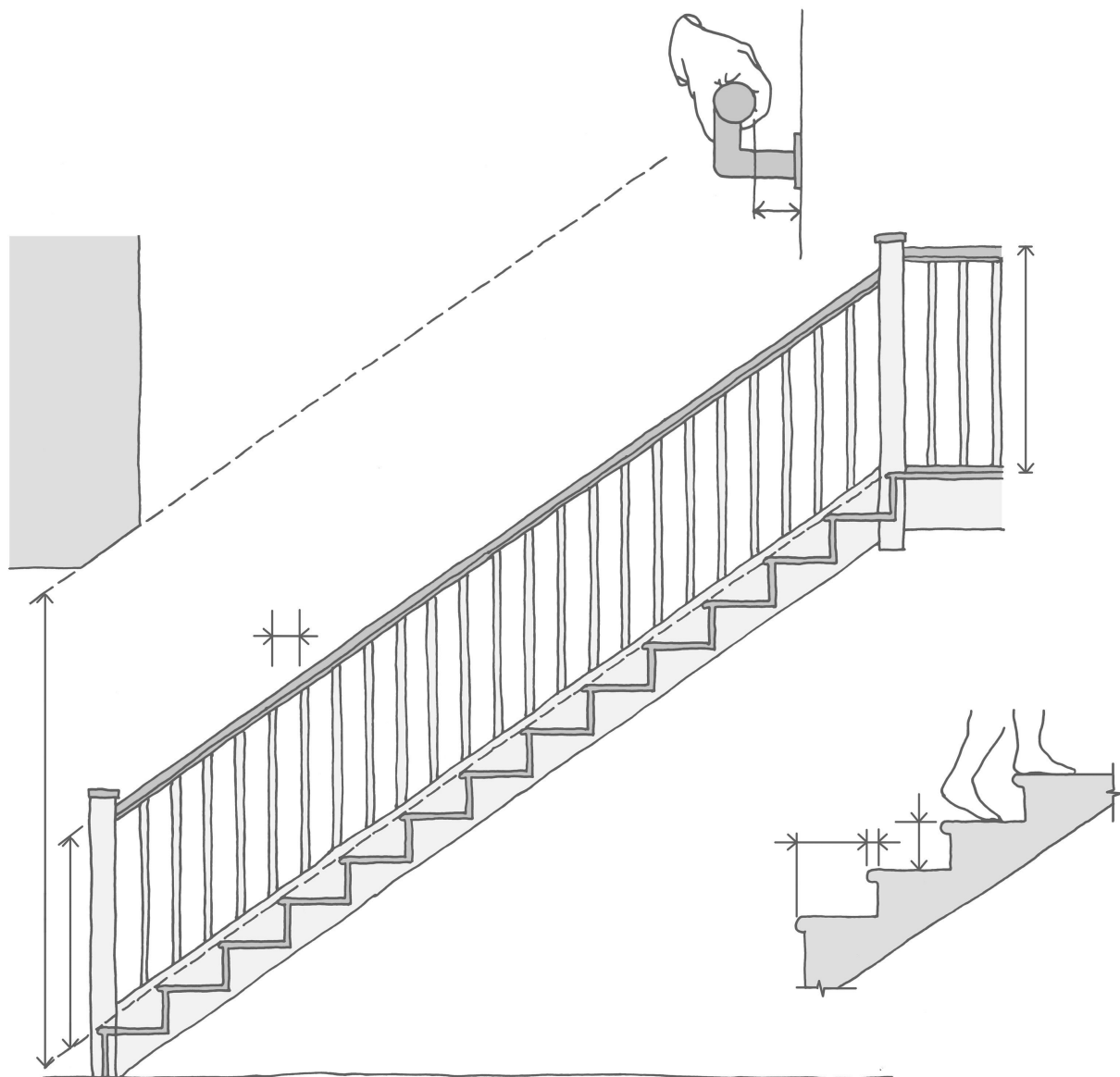
5. Describe two advantages of open web joists.

6. Describe two advantages of precast concrete floors.

7. Describe, briefly, the performance criteria for stairs.

8. Explain the importance of designing stairs for safe use.

9. Explain using notes and labels the building regulations requirements for stairs.



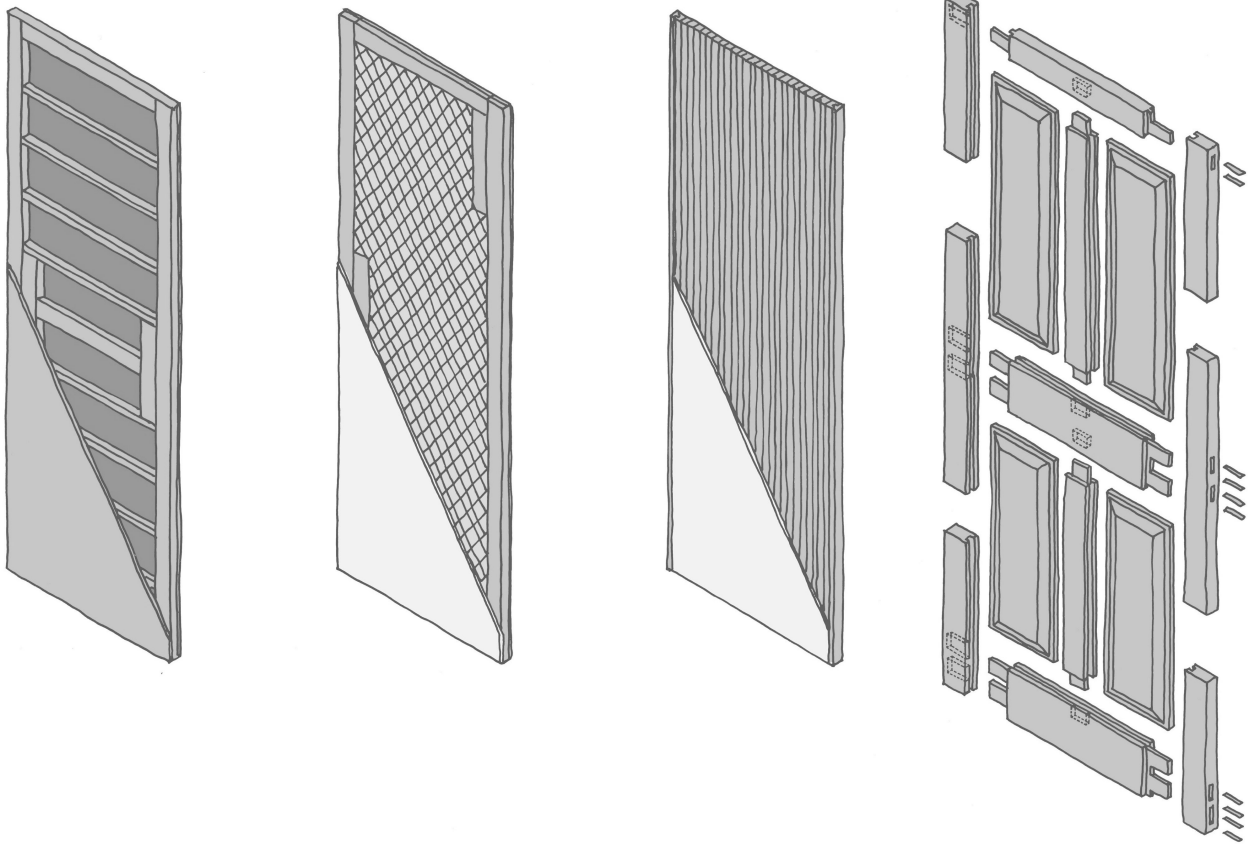
10. Calculate the rise and going for a straight flight of stairs to span between two floors which are 2688mm apart.

11. Outline the performance criteria for internal walls:

12. Explain, using notes and neat annotated sketches, the differences between non load-bearing and load-bearing timber internal walls?

13. Explain, using notes and a neat annotated sketch, the guidelines for accommodating services in a timber stud.

14. Label the parts.



15. Explain, using notes and a neat annotated sketch, how a fire door resists the spread of fire.
